

# THE SPOKESMAN-REVIEW

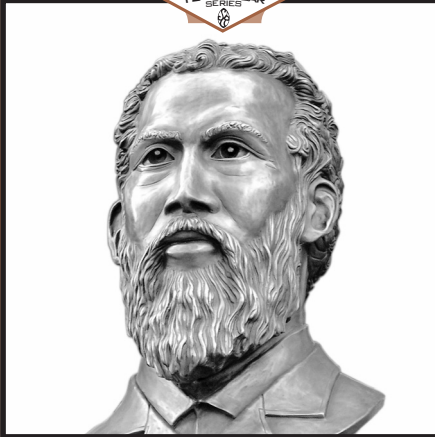
NOW IN OUR 125TH YEAR



Collect free Northwest Trader™ trading cards, compliments of The Spokesman-Review. This series features the visionary men and women who helped define our city. Collect them all! Look for more cards in *The Spokesman-Review*.

BUILDERS AND LEADERS

125TH YEAR SERIES

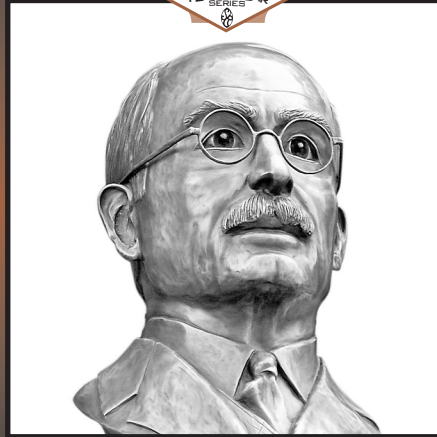


**PETER B. BARROW**  
PASTOR, ENTREPRENEUR, PUBLISHER

CAREFULLY CUT OUT CARDS ON DOTTED LINE

BUILDERS AND LEADERS

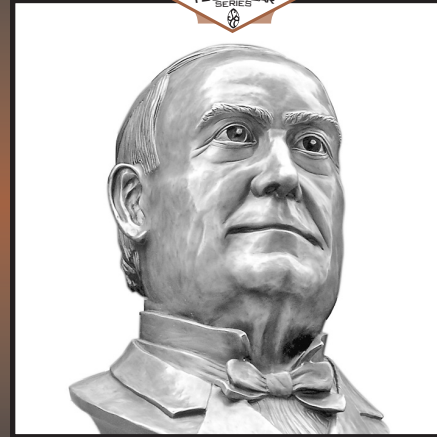
125TH YEAR SERIES



**WILLIAM H. COWLES**  
PUBLISHER, BUSINESS LEADER,  
PHILANTHROPIST

BUILDERS AND LEADERS

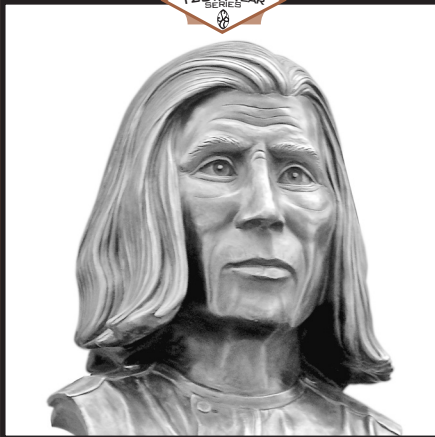
125TH YEAR SERIES



**JAMES N. GLOVER**  
DEVELOPER, MAYOR,  
"FATHER OF SPOKANE"

BUILDERS AND LEADERS

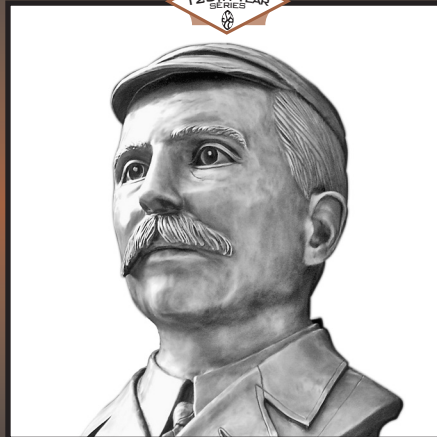
125TH YEAR SERIES



**SPOKANE GARRY**  
TEACHER, CHIEF OF THE SPOKANES,  
RIGHTS ADVOCATE

BUILDERS AND LEADERS

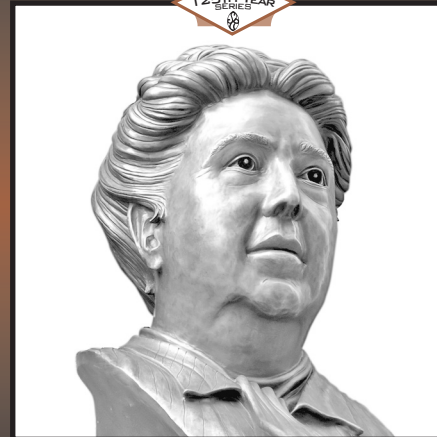
125TH YEAR SERIES



**JAY P. GRAVES**  
RAILROAD AND MINE DEVELOPER,  
COLLEGE BENEFACTOR

BUILDERS AND LEADERS

125TH YEAR SERIES



**MAY ARKWRIGHT HUTTON**  
MINE OWNER, RIGHTS ACTIVIST,  
PHILANTHROPIST

BUILDERS AND LEADERS

125TH YEAR SERIES

"Builders and Leaders" (sometimes referred to as "The Spokesman-Review Bronzes") is an installation of 12 bronze busts honoring early business and community leaders who influenced the development of Spokane. The busts are installed on the east wall of the newspaper's production facility at 1 North Monroe Street in Spokane.

The bronzes, by Walla Walla-based sculptor Wayne Chabre, were commissioned by The Spokesman-Review in mid-2002 and installation was completed on October 8, 2003. Chabre's concept for the exterior art project was selected from 16 designs submitted in response to requests for proposals sent out in mid-2002.

Applications came from both local and non-local artists. Chabre's works are mounted on the capitals of the building's east-facing exterior wall and provide counterpoint to the gargoyles atop the historic Chronicle Building on the east side of Monroe Street.

The bronzes were cast by Trevor Hunter of T. Hunter Bronze Foundry in Walla Walla. Plaques identifying the sculptures were designed by Jeanne McMenemy, also of Walla Walla, and cast at Metallic Arts in Spokane.

(Continued on other side)